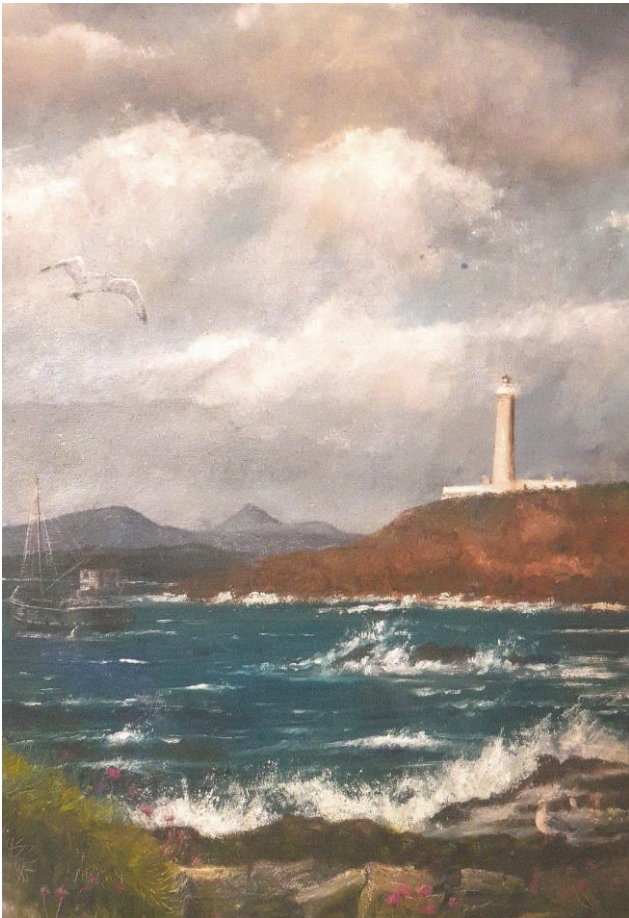


Archie Davidson painting catalogue

This February 2024 catalogue, comprising 30 paintings, forms a small portion of Archie's 80 plus canvases. The descriptions are authored by Archie. Aside the 30 paintings, Archie wants to include one of his model locomotives. **Ex.CR Suburban Tank Engine** is one of several Archie has made, constructed entirely from metal; nickel silver sheet, brass bar and wheels turned from rough cast iron mouldings.



01 **Ardamurchan Lighthouse and Clyde Puffer**, looking towards the Small Isles. These vessels sailed throughout Western Scotland, including the Outer Isles. They were made famous by Neil Munro's *Para Handy and Other Tales* (1931). He was skipper of *The Vital Spark*, played in two BBC productions by Duncan Macrae and later by Roddy MacMillan.



02 - **Fishing Expedition.**

It's a hazardous life being an ornamental fish – if two marauding cats don't get you a passing heron probably will.



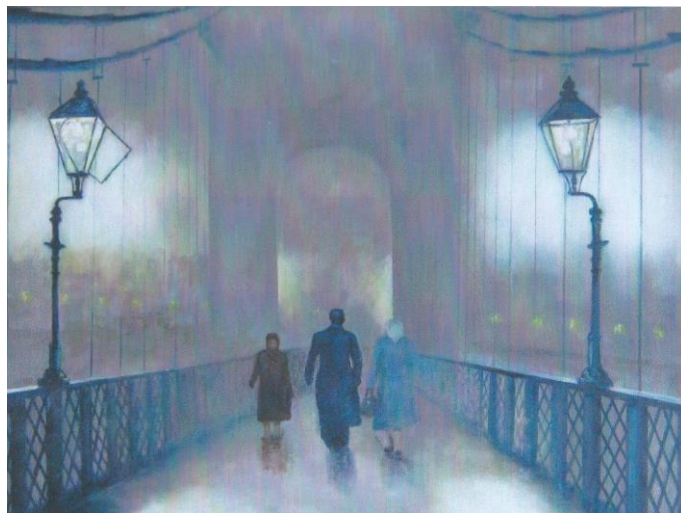
03 **Millionaires' Mile.** A Herald article in 2003 claimed that 'there were more millionaires in Morningside than anywhere else in Scotland'.



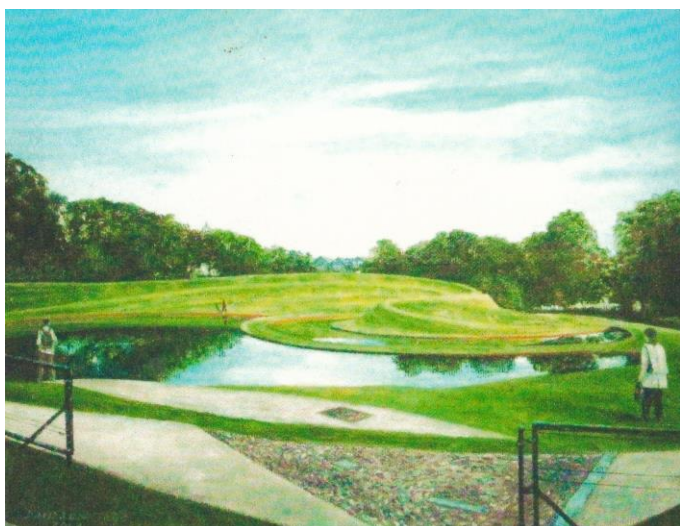
04 **'Dunara Castle' leaving Lochmaddy.** Known affectionately as 'The Dunara' by Hebrideans. 'The Dunara' had a long life. Built in 1875, scrapped in 1948.



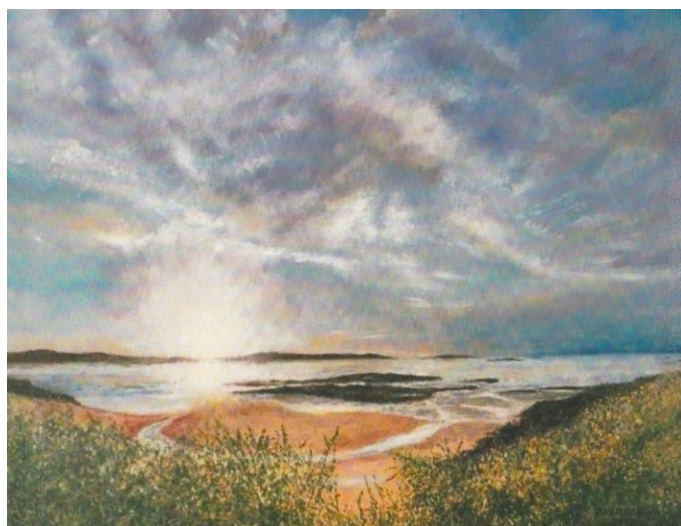
05 **Greig Street Bridge Inverness**, spanning the Ness. The bridge has survived the Greig Street Sinewave, a resonant oscillation achieved by groups of young people stamping in unison one third of the way along the footpath.



06 **St Andrew's Bridge by Gaslight c.1950**. Built between 1853 and 1854 it spans the Clyde between Glasgow Green and Hutchesontown.



07 **Charles Jenck's 'Landform'** at the Gallery of Modern Art, Edinburgh.



08 **Ian's View from his holiday hideaway at Cardoness**. Ian R C Cowie, President of the RHS FP Club for a memorable 5 years, retiring in 2023. He fulfilled his duties with the enthusiasm and dedication which the post demands. He is a role model for aspirants to the title.



09 **A Ship Set Free**. The launch in 1956 at Henry Robb's Leith Yard of the 'Kaitoa' for the NZ Steamship Company.



10 **A Willie Stewart Boat**. Boatbuilder, Grimsay, Outer Hebrides. Boats like these were used to convey passengers and goods across the North Ford between Benbecula and North Uist before a causeway was constructed in 1960.



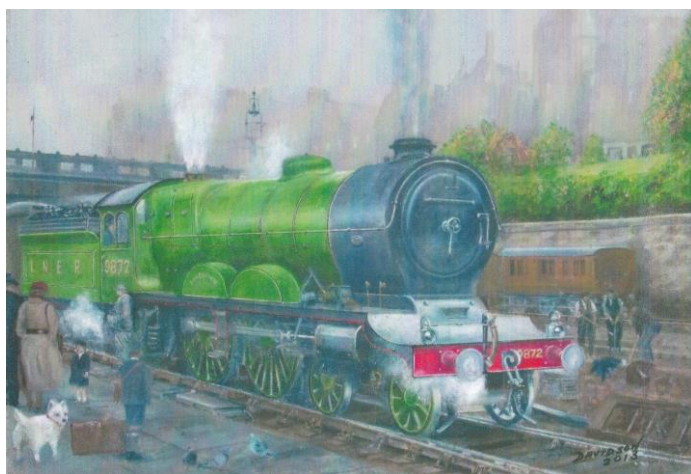
11 **TSR2 (Tactical Strike and Reconnaissance** – a misleading title!). The TSR2 was developed during the Cold War to deliver a nuclear weapon deep into Eastern Europe. It was intended to fly below enemy radar, guided by a navigational system designed by Ferranti, Edinburgh. The project was scrapped in 1965. There was never a TSR1!



12 **43 (F) Squadron Hawker Hunter C-Charlie**, Leuchars c.1960. These aircraft were fitted with radar-ranging gyroscopic gunsights, manufactured by Ferranti, Edinburgh.



13 **Wilbur de Paris's New Orleans Band** at Atlantic Recording Studios, 1955. Popular during the traditional jazz revival of the mid-fifties.



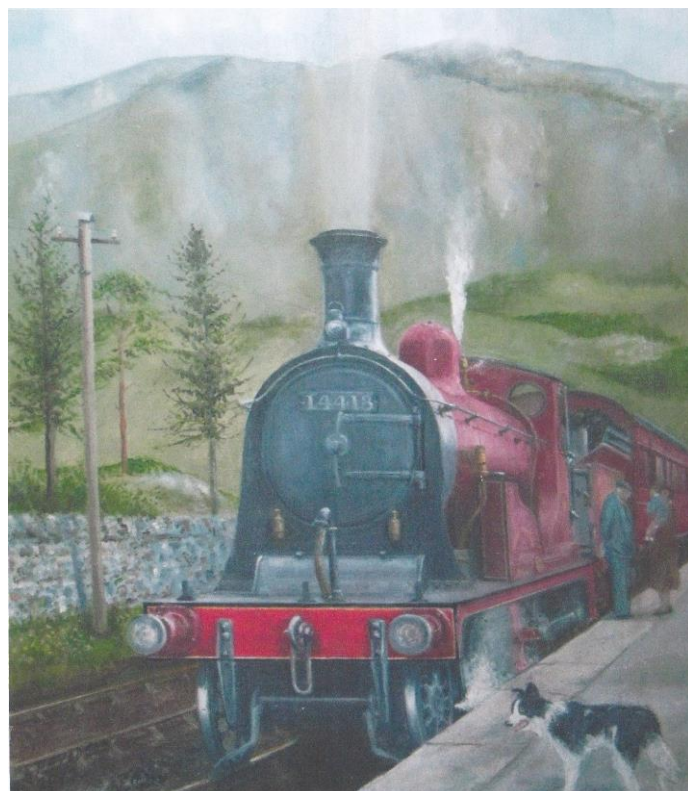
14 **'Auld Reekie' c.1930**. This class of locomotive was designed by the NBR for the Aberdeen and Carlisle routes. The engine was scrapped in 1935. The last of the class, 'Midlothian', was scheduled for preservation in 1938 but with the intervention of the War the plan was abandoned.



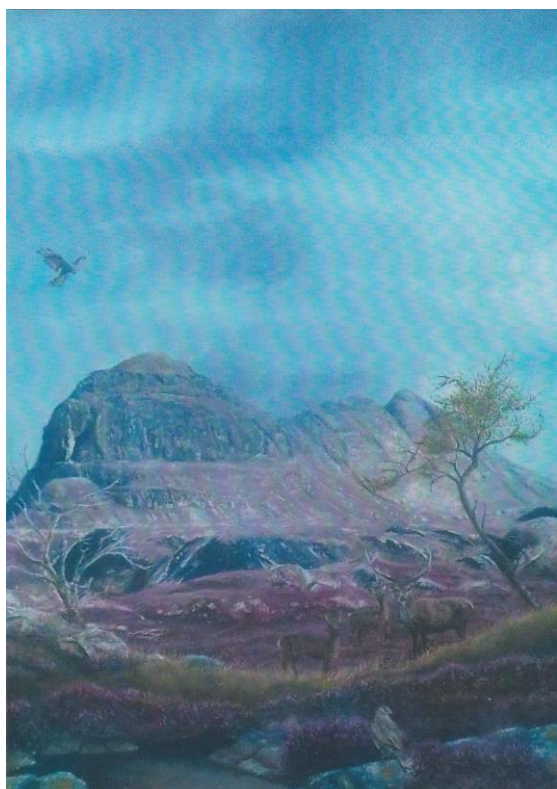
17 **Cockle Gatherers, North Ford Benbecula c.1950**. This was a treacherous location, where enticing sand banks would quickly surround with swirling deep water.



15 **Waverley Steam c.1947 (and a steamy kiss).** A4 'Merlin' (same class as record holder 'Mallard') and ex-NBR 'Lady of Avenel'. Also a Waverley rat (much bolder than a Cuneo mouse) examines the seated lady's basket. (Painting belongs to former AHT John Y Murray, a fellow steam enthusiast.)



16 **Ex Highland Railway 'Ben Alligan' c.1920s.** Scrapped in 1933. A group of enthusiasts are attempting, as funds permit, to build a replica using the original Inverness Lochgorm Works drawings. It is intended to run the locomotive on the Strathspey Railway. (Painting belongs to former AHT John Y Murray)



18 **Sullivan, West Sutherland, and Some Wild Life.** A favourite mountain of Alastair Allanach. School Historian – but he is so much more! Alastair prefers to remain in the background but his achievements are very visible.



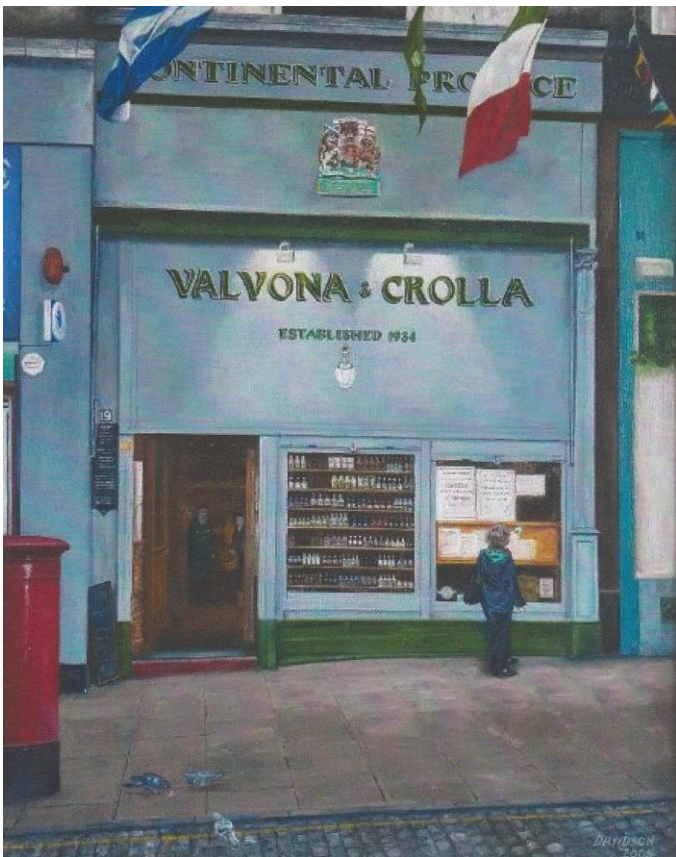
20 **Suburban Fox.** In recent years there has been an increase of the fox population in the RHS catchment area. Encouraged by some as a welcome addition to the local wildlife. Others do not share this opinion. The grey squirrel is similarly regarded.



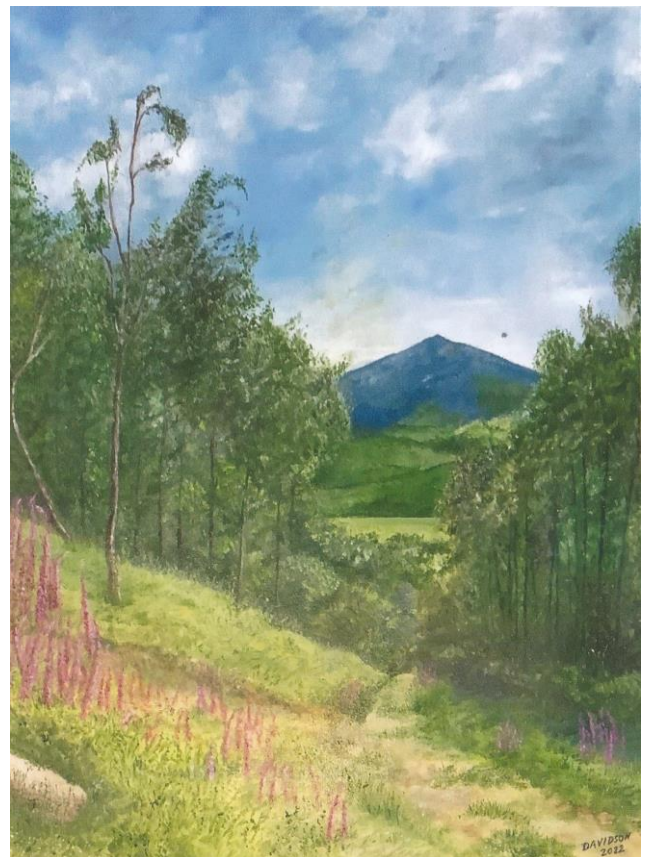
19 Binns Corner from Entrance to Caledonian Station c.1950. A 26 tram heads out to Corstorphine. This route was part of an extensive network which served the suburbs. The last route closed was the 23, in 1956. It ran from Granton Road Station to Morningside Station. The Caledonian Station closed in 1965.



28 The House with a Windmill. Kastellaun, Germany. The home of Rolf's Parents. Rolf, a Heriot-Watt Student in the early 2000s.



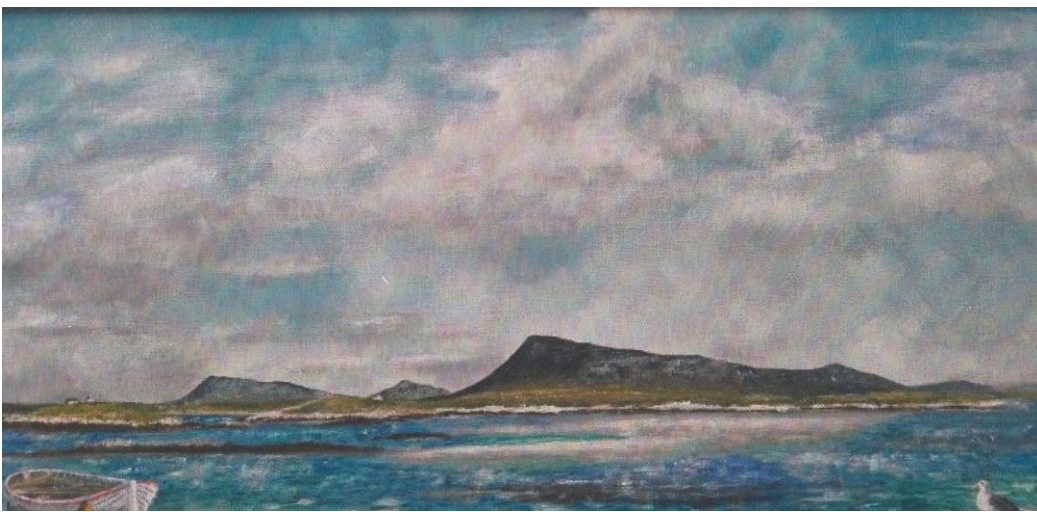
21 Festival Time in Elm Row. Phillip and Mary Contini's Delicatessen and Café Bar, Edinburgh. A popular location for Festival events with an Italian flavour.



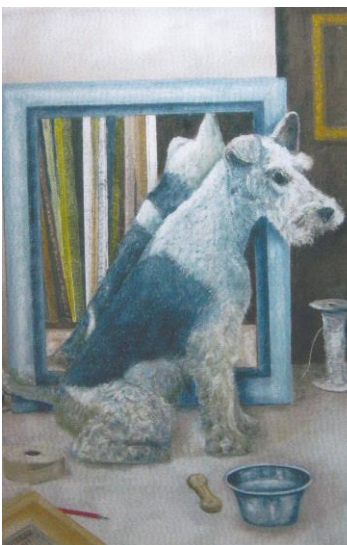
22 A Walk Through the Woods and Schiehallion. The unique symmetry of this mountain allowed Astronomer Royal, Nevil Maskelyne, to make an estimate of the density of the Earth and from this a value was calculated of Newton's Gravitational Constant, 'big G'. Nevil Maskelyne is also remembered for his shabby treatment of watch-maker John Harrison, who solved the Longitude Problem. This is a favourite mountain of FP Anne Finnegan, now Dame Anne Richards, with honours and achievements too numerous to list!



25 **Morning Departure.** 'Lochmor' sails from Lochmaddy in the shadow of North Lea. 'Lochmor' and twin 'Lochearn' were built in 1930 and were sold to a Greek Company in 1964, leaving the turbulent Minches for the more placid Mediterranean.



27 **North Ford Between Benbecula and North Uist.** (with a distant Eaval and South Lea). Prior to the construction of the causeway, passengers and goods were transferred by boat and occasionally at low tide by horse and trap. Some hardy souls crossed on foot, but this required a thorough awareness of the hazards. There were stories of those, perhaps lingering too long over a final slainte mhaith, who never reached the other shore.



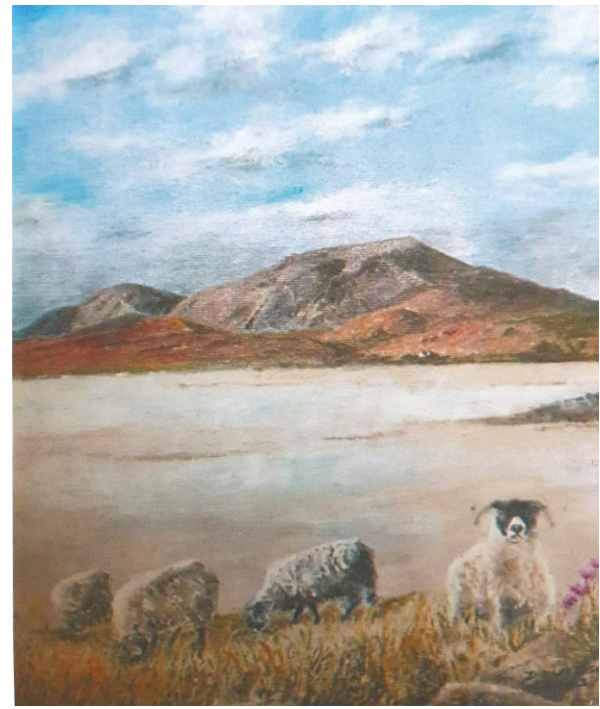
30 **Workshop Mascot** (At Renaissance Framers, Antigua Street. Edinburgh)



Ex.CR Suburban Tank Engine. These were used on the Princes Street ('Caley') Station commuter trains to Leith North and the Barnton Branch, which closed in 1951. This little engine would have regularly steamed along what is now the school driveway. Maintenance was done at Dalry Road engine sheds, next to the cemetery, accessed by a stair off Coffin Lane, now part of the West Approach Road.



23 **84 Charing Cross Road Mark's & Co. Bookshop** c.1934. Made famous by Helene Hanff's book (1970), a love story involving books but without the happy ending. Filmed in 1987 with Anthony Hopkins and Anne Bancroft. Leo Marks, son of the owner, was head of the code department of SOE and prepared agents for Occupied Europe. In 'Between Cyanide and Silk' (1998) Leo recalls his work for SOE and also reveals some of the shenanigans inside 84.



24 **Trimsgarry Shore Lewis**. A scene well known to former Rector Matthew Macivor. Matt's spiritual home is in the village of Portnaguran. North Lewis.



26 **'King' Willie**. **Willie Bauld** (1928-77). Heart of Midlothian and Scotland. Presented to Robin Vevers, former APT and Chemistry teacher, at his retirement 'do' in 2008. Robin is a lifelong Hearts fan.



29 **Len Friedman's Wife** - with her beloved Schnauzer terriers. Len owns Renaissance Framers, Antigua Street, Edinburgh.